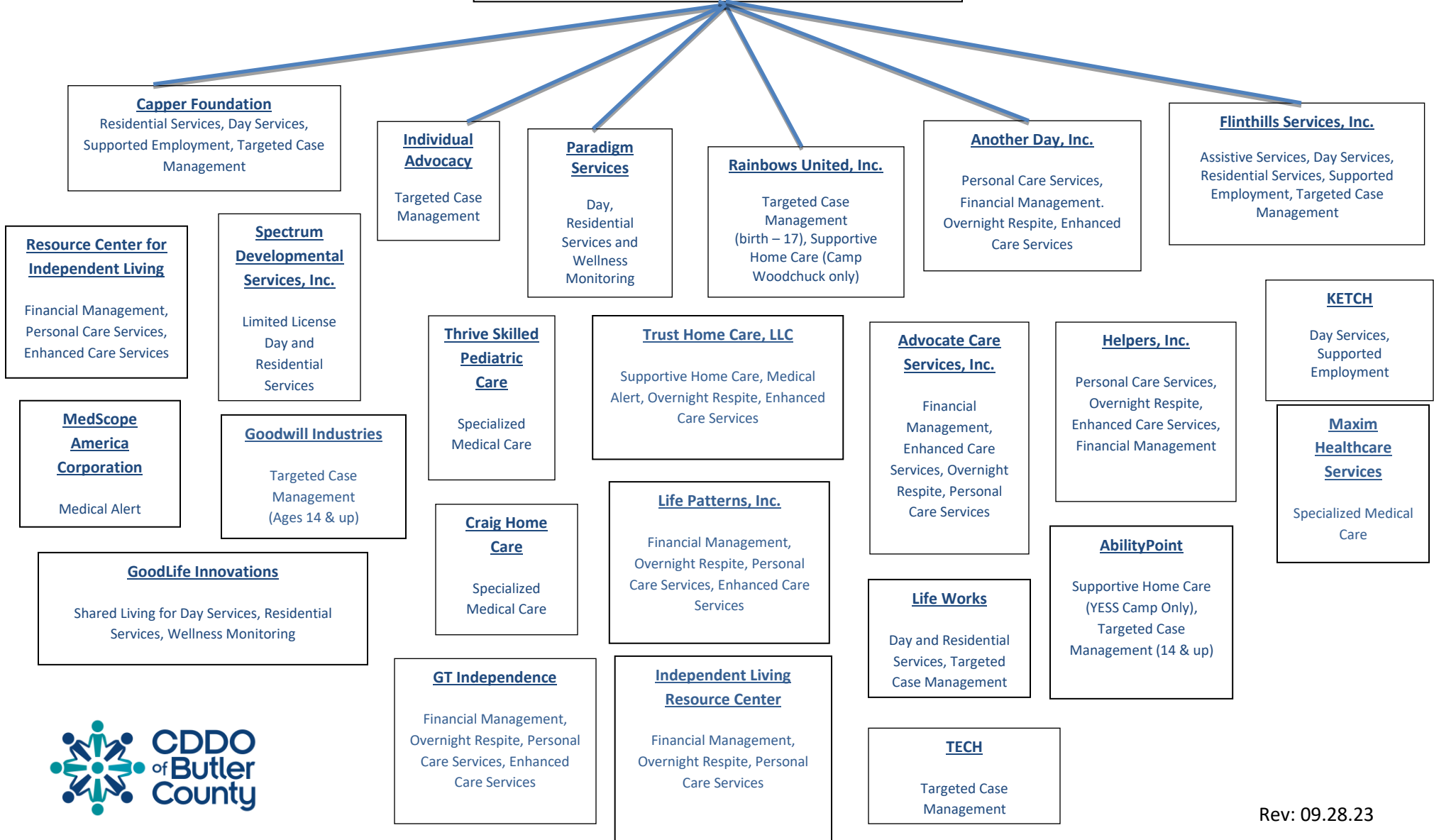


# Kansas Department for Aging and Disability Services

## CDDO of Butler County



Agency	Physical and or Mailing Address	Phone	E-mail	Website
<b>AbilityPoint</b>	2919 W 2nd St. Wichita Ks 67203	(316) 943-1191	<a href="mailto:ariddle@abilitypoint.org">ariddle@abilitypoint.org</a>	<a href="http://www.abilitypoint.org">www.abilitypoint.org</a>
<b>Advocate Care Services</b>	151 S. Whittier Suite 1500, Wichita, KS 67207	(316) 260-9910	<a href="mailto:care@advocatecare.org">care@advocatecare.org</a>	<a href="http://www.advocatecare.org">www.advocatecare.org</a>
<b>Another Day, Inc.</b>	111 S. Whittier Wichita KS 67207	(316) 201-1730	<a href="mailto:rebecca@helpersinc.org">rebecca@helpersinc.org</a> <a href="mailto:dwilson@capper.org">dwilson@capper.org</a>	<a href="http://www.anotherdayinc.com">www.anotherdayinc.com</a>
<b>Capper Foundation</b>	622 N. Haverhill Rd., El Dorado, KS 67042	(316) 320-7531		<a href="http://www.capper.org">www.capper.org</a>
<b>Craig Homecare</b>	1100 E 1 <sup>st</sup> Street N Wichita KS 67202	(316) 264-9988	<a href="mailto:megans@craighomecare.com">megans@craighomecare.com</a>	<a href="http://www.craighomecare.com">www.craighomecare.com</a>
<b>Flinthills Services, Inc.</b>	505 S. Walnut Valley Drive, El Dorado, KS 67042	(316) 321-2325	<a href="mailto:kathywalter@flinthillsservices.org">kathywalter@flinthillsservices.org</a>	<a href="http://www.flinthillsservices.org">www.flinthillsservices.org</a>
<b>GoodLife Innovations</b>	PO Box 14395, Lenexa Ks 66285	(785) 865-5520	<a href="mailto:linhnguyen@mygoodlife.org">linhnguyen@mygoodlife.org</a>	<a href="http://www.mygoodlife.org">www.mygoodlife.org</a>
<b>Goodwill Industries</b>	3351 N. Webb Rd, Wichita Ks 67226	(316) 774-9291	<a href="mailto:gneal@goodwillks.org">gneal@goodwillks.org</a>	<a href="http://www.goodwillks.org">www.goodwillks.org</a>
<b>GT Independence</b>	7300 W 100th St. Commerce Plz I 7th Floor, Overland Park, Ks 66210	(877) 659-4500	<a href="mailto:customerservice_ks@gtindependence.com">customerservice_ks@gtindependence.com</a>	<a href="http://www.gtindependence.com">www.gtindependence.com</a>
<b>Helpers, Inc.</b>	11806 W 77 <sup>th</sup> St, Lenexa, kS 66214	(913) 322-7212	<a href="mailto:rebecca@helpersinc.org">rebecca@helpersinc.org</a> <a href="mailto:cunruh@ilrcks.org">cunruh@ilrcks.org</a>	<a href="http://www.helpersinc.org">www.helpersinc.org</a>
<b>Independent Living Resource Center</b>	3033 W. 2nd St. N. Wichita, Ks 67203	(316) 942-6300		<a href="http://www.ilrcks.org/home">www.ilrcks.org/home</a>
<b>Individual Advocacy</b>	3013 E US Hwy 54 Andover, KS 67002	(316) 613-3990	<a href="mailto:malon@iatcm.us">malon@iatcm.us</a>	NA
<b>KETCH</b>	1006 E Waterman Wichita, KS 67211	(316) 383-8700	<a href="mailto:sjensent@ketch.org">sjensent@ketch.org</a>	<a href="http://www.ketch.org">www.ketch.org</a>
<b>Life Patterns</b>	3300 SW 29 <sup>th</sup> St Suite 100 Topeka Ks 66614	(785) 273-7189	<a href="mailto:jon@lifepatternsks.org">jon@lifepatternsks.org</a>	<a href="http://www.lifepatternsks.org">www.lifepatternsks.org</a>
<b>Life Works</b>	1855 S. Rock Rd. Suite 129 Wichita, Ks 67207	(316) 201-1203	<a href="mailto:lisa.woods@lifeworksperiod.co">lisa.woods@lifeworksperiod.co</a>	NA
<b>Maxim Healthcare Services. Inc</b>	8110 E. 32nd St. N #160, Wichita Ks 67226	(316) 201-9401	<a href="mailto:taarcuri@maxhealth.com">taarcuri@maxhealth.com</a>	<a href="http://www.maximhealthcare.com">www.maximhealthcare.com</a>
<b>MedScope America Corporation</b>	222 W. Lancaster Ave. Paoli, PA 19301	(800) 645-2060 X700		<a href="http://www.medscope.org">www.medscope.org</a>
<b>Paradigm Services</b>	1235 Starkey Augusta, KS 67010	(316) 247-3935	<a href="mailto:alex@paradigmservicesinc.org">alex@paradigmservicesinc.org</a>	NA
<b>Rainbows United</b>	3223 N. Oliver, Wichita, KS 67220	(316) 558-3430	<a href="mailto:lsouthards@rui.org">lsouthards@rui.org</a>	<a href="http://www.rainbowsunited.org">www.rainbowsunited.org</a>
<b>Resource Center for Independent Living</b>	615 1/2 Main. El Dorado Ks 67042	(800) 580-7245	<a href="mailto:deone@rcilinc.org">deone@rcilinc.org</a>	<a href="http://www.rcilinc.org">www.rcilinc.org</a>
<b>Spectrum Developmental Services</b>	210 W 3 <sup>rd</sup> Apt A43 Andover KS 67002	(316) 207-8377	<a href="mailto:paul.shoemaker@yahoo.com">paul.shoemaker@yahoo.com</a>	NA
<b>TECH</b>	10 East 1st Ave Hutchinson, Ks 67501	(620) 663-2216	<a href="mailto:apenner@techinc.org">apenner@techinc.org</a>	<a href="http://www.techinc.org">www.techinc.org</a>
<b>Thrive Skilled Pediatric Care, LLC</b>	245 N. Waco Suite 125 Wichita, Ks 67207	(316) 522-0608	<a href="mailto:ldalrymple@thrivespc.com">ldalrymple@thrivespc.com</a>	<a href="http://www.thrivespc.com">www.thrivespc.com</a>
<b>Trust Homecare</b>	250 N. Rock Road Suite 210, Wichita Ks 67206	(316) 683-7700	<a href="mailto:info@trusthomecare.com">info@trusthomecare.com</a>	<a href="http://www.trusthomecare.com">www.trusthomecare.com</a>